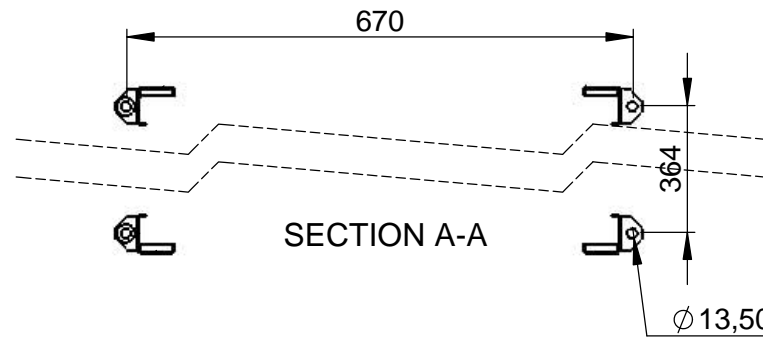
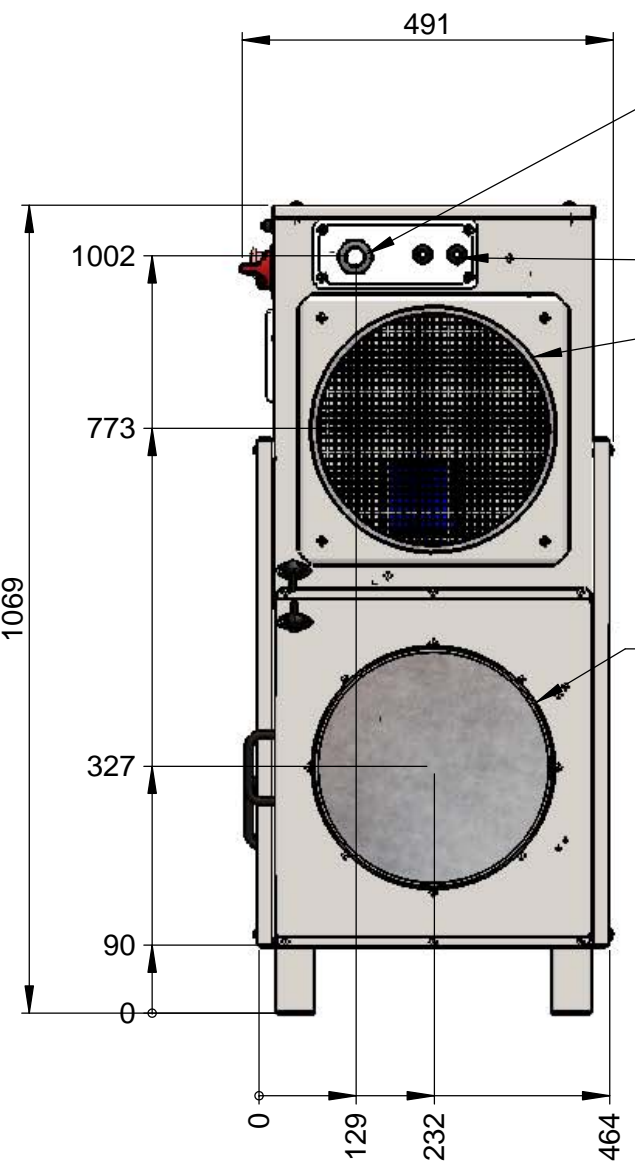


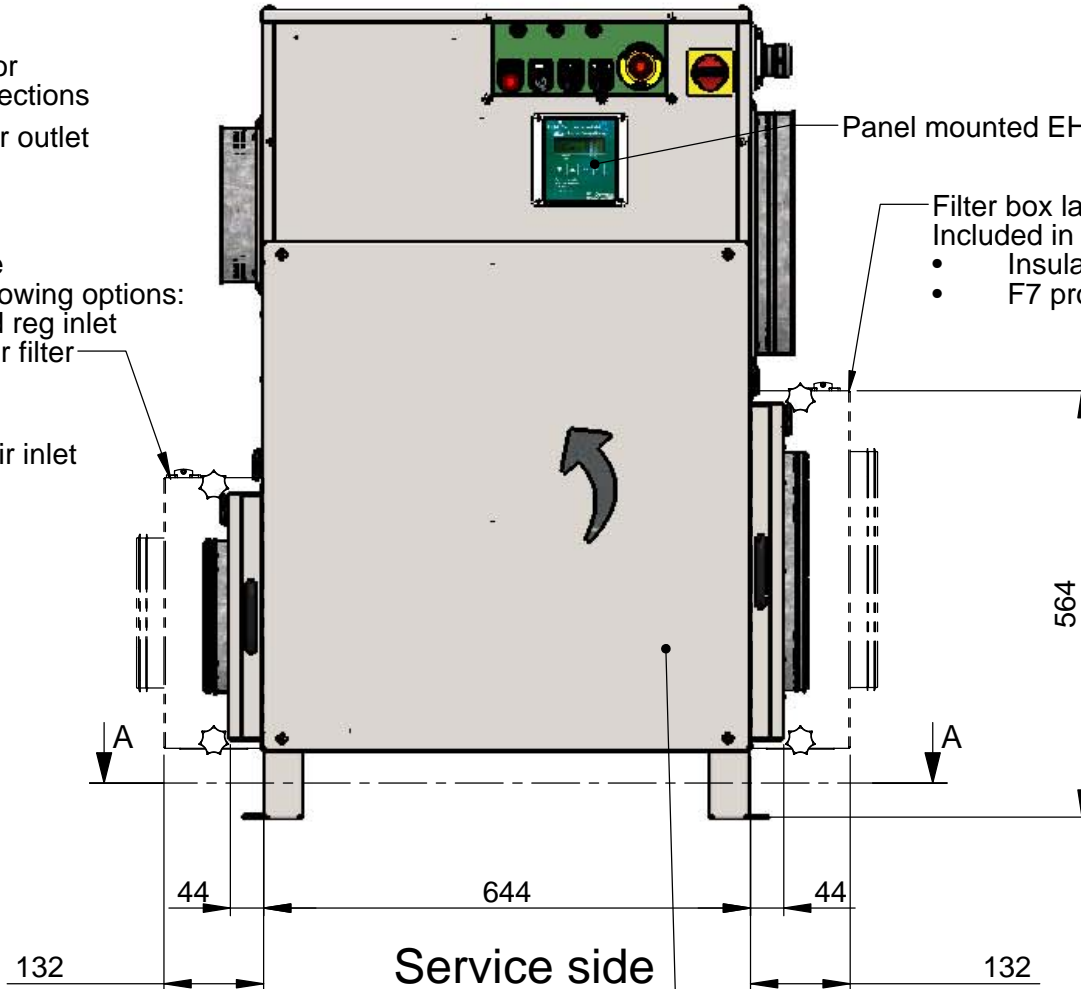
REVISIONS			
REV.	DESCRIPTION	DATE	APPROVED
01	Standard filterboxes introduced. Filterboxes F7 redesigned	2016-03-09	EL
02	Filterbox large info added. Panel mounted PLC C4 view added	2017-08-25	EL
03	Filter box handles updated, unit width added	2017-11-23	EL



Removable top cover
 Elcetrical cabinet access
 Service space above unit = 500 mm



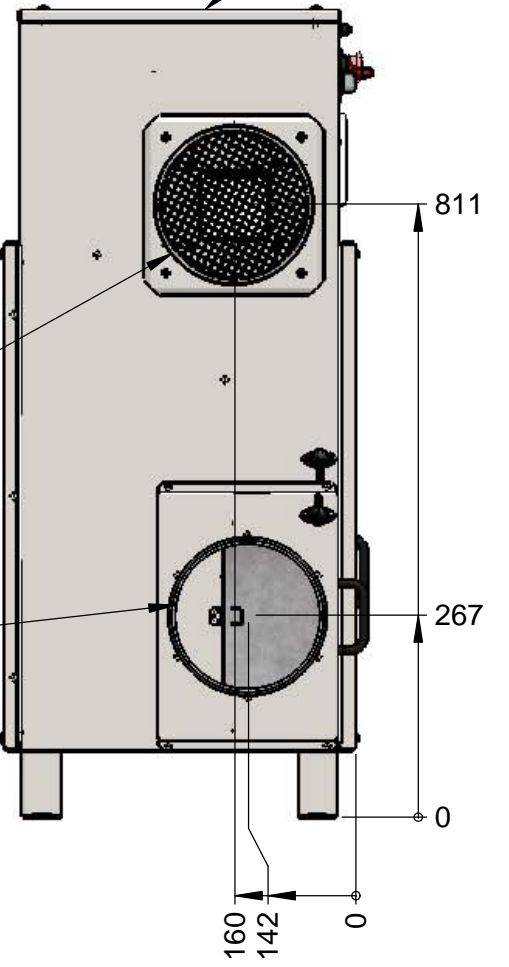
Electric supply
 Cable glands for customer connections
 Ø315 Dry air outlet
 Filter box large
 Included in following options:
 • Insulated reg inlet
 • F7 reg air filter



Service side

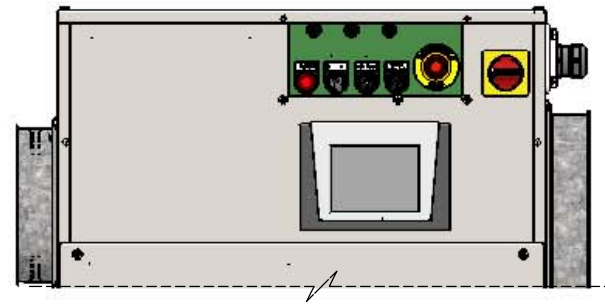
Panel mounted EH3/EH4 (option)
 Filter box large
 Included in following options:
 • Insulated proc inlet
 • F7 proc air filter

Ø200 Wet air outlet
 Ø200 Reg air inlet



Packaging dimensions:
 WxDxH = 850x600x1200
 Weight ~70 kg

Panel mounted PLC C4 (option)



This document and its contents are the exclusive property of DST Seibu Giken and must not be copied, reproduced, transmitted or communicated to any other party or used for purposes not expressly permitted by us.

